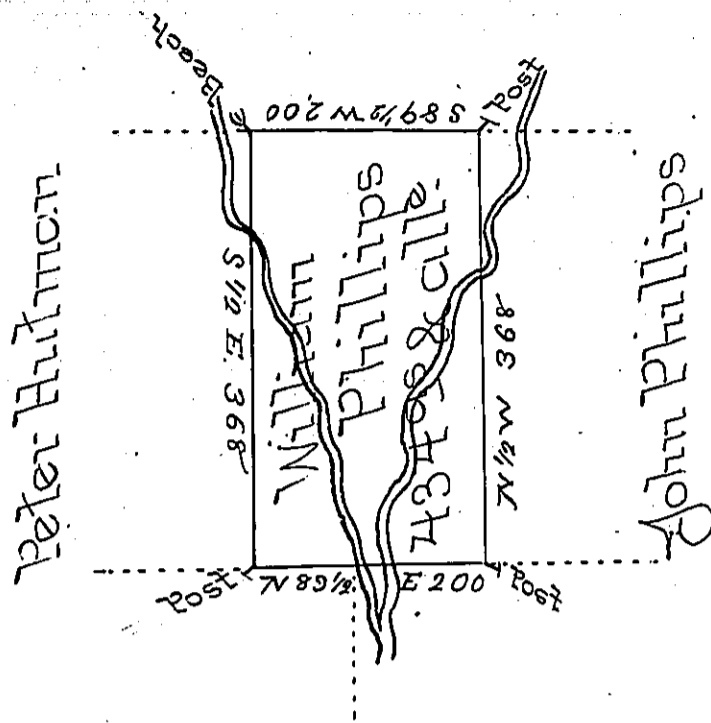


Mary Hewes



Peter W Galandet

John Ely

In Pursuance of a Warrant Dated August 17th 1793 Sur-
veyed to William Phillips Sept: 18th 1793 the above Des-
cribed Tract of land Situate on small branch of Oxbow
Creek in the County of Luzerne Containing Four Hundred
& thirty four Acres and allowance of 6 P C^t

ARTH. Crothers D.S.

Da: Brodhead Esq:
Surveyor Gen: -

IN TESTIMONY that the above is a copy of the original remaining on file in
the Department of Internal Affairs of Pennsylvania, made
conformably to an Act of Assembly approved the 16th day of
February, 1833, I have hereunto set my Hand and caused
the Seal of said Department to be affixed at Harrisburg,
this seventh day of February 1899.

James W. Latta
Secretary of Internal Affairs.